

## INSTALLATION NOTES

### INSPECT THE SITE AND ENSURE ALL PARTS ARE PRESENT

CLEAN THE AREA OF ANY DEBRIS BEFORE INSTALLING BOLLARDS

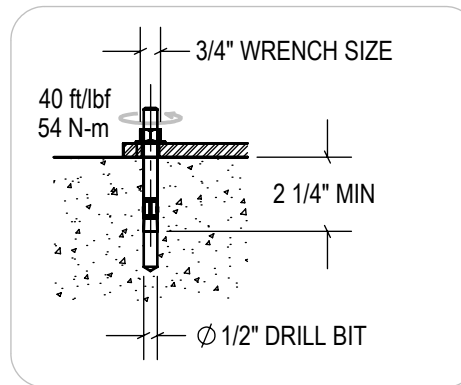
### SAFETY PRECAUTIONS

USE APPROPRIATE PERSONAL PROTECTIVE EQUIPMENT SUCH AS GLOVES, SAFETY GLASSES, HEARING PROTECTION AND PROTECTIVE SHOES.

### ANCHOR BOLTS

THE SUPPLIED ANCHOR BOLTS REQUIRE AN MINIMUM EMBEDDED DEPTH OF 2-1/4"

TIGHTEN THE NUT TO THE INSTALLATION TORQUE OF 40 ft/lbf [54 N-m]

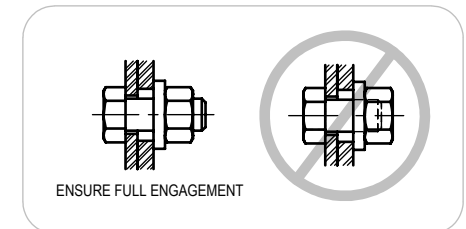


### BOLT TIGHTENING

INITIALLY TIGHTEN THE JOINT TO A SNUG TIGHT CONDITION. SNUG TIGHT IS WHEN THE BOLTED CONNECTION HAS BEEN TIGHTENED TO A POINT WHERE ALL THE COMPONENTS ARE IN FIRM CONTACT.



ENSURE THAT THE NUT IS FULLY ENGAGED WITH THE BOLT AND THAT A FEW THREADS PROJECT FROM THE REAR OF THE BOLT AFTER THE JOINT IS IN A SNUG TIGHT CONDITION. OTHERWISE, A LONGER BOLT WILL BE NEEDED TO ENSURE FULL STRENGTH.

DO NOT OVERTIGHTEN BOLTS. ONLY TIGHTEN THE JOINT BY 1/3 OF A TURN PAST THE SNUG TIGHT CONDITION

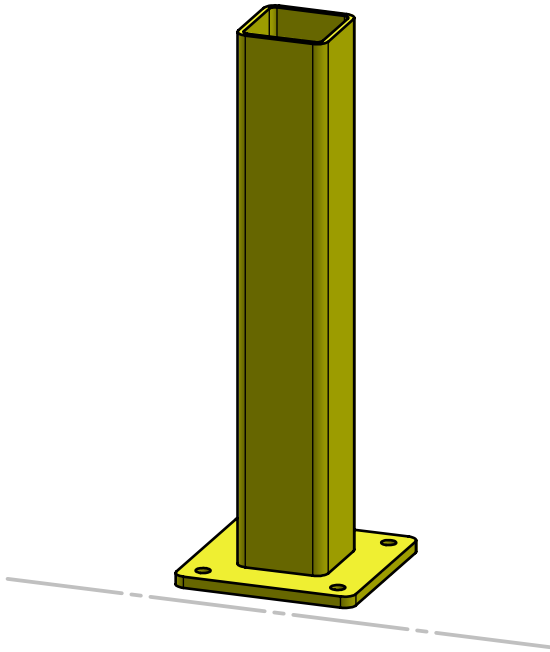


### TOOLS REQUIRED FOR INSTALLATION

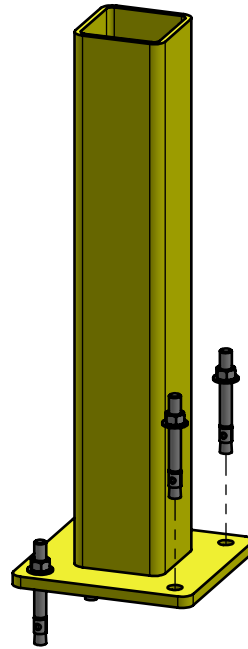
- MEASURING TAPE
- CHALK LINE
- 2FT LEVEL
- HAMMER DRILL WITH A 1/2" DRILL BIT
- 3/4" SOCKET AND WRENCH

 3rd Angle	SIZE: <b>A</b>	
DESCRIPTION: <b>BOLLARD INSTALLATION</b>		
SCALE: NTS	SHEETS: 1 of 1	DRAWING NUMBER: <b>INS-01.01-R1</b>

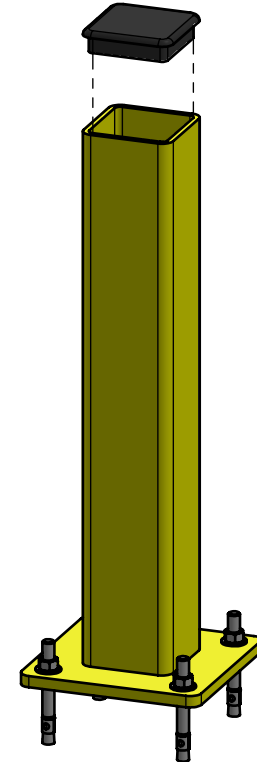
# INSTALLATION INSTRUCTIONS





**STEP 1:**  
POSITION THE BOLLARD  
IN THE DESIRED LOCATION



**STEP 2:**  
LAG THE BOLLARD TO THE FLOOR  
USING PROVIDED ANCHORS  
AND SPECIFICATIONS



**STEP 3:**  
ADD BOLLARD CAP

 3rd Angle	SIZE: <b>A</b>	
DESCRIPTION: <b>BOLLARD INSTALLATION</b>		
SCALE: 1:8	SHEETS: 1 of 1	DRAWING NUMBER: <b>INS-10.01-R1</b>